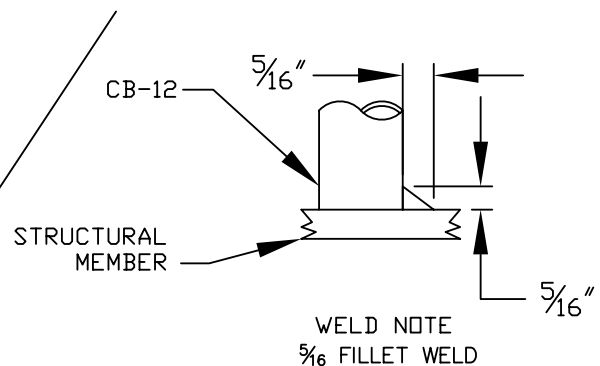


NOTES:

1. Weld CB-12 to a structural member capable of resisting a 5,000 lb. load using a 5/16" fillet weld.
2. All welding shall be performed by a certified welder using E-70xx rod or wire feed.
3. Prep galvanized areas per AWS D19.0 prior to welding.
4. Touch-up galvanized area after welding per ASTM A780.



INSTALLATION INSTRUCTIONS

TITLE
CB SERIES
ROOF ANCHOR

GUARDIAN
FALL PROTECTION

DESIGNED BY: B. WOODYARD 1992

DRAWN BY: PHIL GOMES 01/27/2005

CHECKED BY: M. VOLLMER CHECKED DATE

APPD BY: M. VOLLMER APPROVED DATE

DWG NO.
CB-12 WELDMENT

SCALE: NONE

SIZE A REV NEW

SHEET: 1